	<h1 style="text-align: center; color: blue;">CHATTERBOX</h1> <p style="text-align: center;">Panania Public School 21A Lawler Street, Panania NSW 2213  Phone: 9773 9017 Email: <a href="mailto:panania-p.school@det.nsw.edu.au">panania-p.school@det.nsw.edu.au</a>  <a href="http://www.panania-p.schools.nsw.gov.au">www.panania-p.schools.nsw.gov.au</a></p>	<p style="text-align: center;"><b>Term 4</b></p> <p style="text-align: center;"><b>Week 6</b></p> <p style="text-align: center;"><b>18/11/2020</b></p>
---	---	--

## PRINCIPAL'S MESSAGE

### School Planning

The staff of Panania Public School are currently in the process of assessing, collating and analysing student data in planning and preparing for student reporting and 2021 classes. We are also engaging in collaborative evaluative processes and practices including the analysis of PLAN2 Literacy and Numeracy data, PLAN2 Phonics Screening (K-2), PLAN2 Phonological Awareness diagnostic (K-2), reading levels, SENA records, parent/ teacher/student surveys, student interviews and focus groups, student work samples, teacher observations, student Personalised and Learning Support Plans, student voice evidenced in goal setting and teaching programs. This comprehensive inquiry has led to the draft formation of our three strategic directions for the 2021-2024 school plan.

#### Strategic Direction 1: Student Growth and Attainment

To improve student learning outcomes in literacy and numeracy by developing and implementing quality programs informed by data. Teaching and learning will feature explicit instruction and effective feedback, underpinned by evidence based research and robust evaluative processes.

#### Strategic Direction 2: Wellbeing and Positive Partnerships

To foster a cohesive and inclusive school environment where positive partnerships are nurtured and holistic programs are responsive to identified student needs, ensuring that every student is known, valued and cared for.

#### Strategic Direction 3: Learning Culture and Quality Practices

To provide evidence based professional learning and development opportunities evoking perpetual growth and passion in all teachers, inspiring them to reflect and refine practices. Embed evaluative thinking in collaborative learning frameworks ensuring that every student, every teacher and every leader demonstrates growth and improvement.

### COVID19 Update

As of Thursday, 12 November, Department of Education has updated COVID-19 guidelines.

- Whole school assemblies can recommence with no parents or carers.
- Presentation Day can proceed with no parents or carers, proposed date is Tuesday, 8 December at school.
- Year 6 Formal can proceed with no parents or carers, proposed date is Wednesday, 9 December at Revesby Workers Club, Waratah Room.

- P&C meetings can occur on school site with executives and invited guests only, limited to a maximum of 20 people. Physical distancing and hygiene measures must be adhered to at all times and attendees must complete and sign a visitor acknowledgement form.
- External providers delivering educational services can proceed with a COVID plan in place.
- End of Term 4 school development day can proceed with a maximum of 100 staff members in attendance.
- Year 7 Orientations can proceed following the conclusion of the HSC.
- Opportunity Class testing for 2021 rescheduled at Panania PS for today, Wednesday, 18 November.
- Field trips, excursions and camps can proceed.
- Practicum teaching for tertiary education students is permitted.
- Kindergarten transitions permitted.

For the remainder of the school year there is no change to the following:

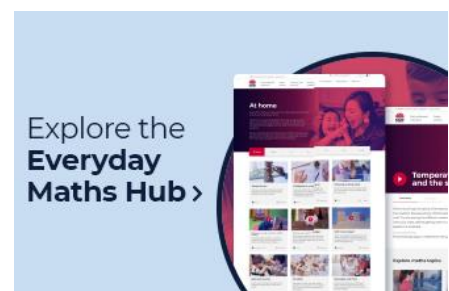
- The mixing of students from different cohorts for learning activities to be avoided.
- All staff to adhere to 1.5 m physical distancing rule, physical distancing of students is not required by the AHPPC guidelines.
- Parents and carers are unfortunately still not permitted on school grounds or at school events.
- Community social events or functions, fetes and barbecues are not permitted.
- All essential visitors to complete a visitor acknowledgement form on arrival.
- All students to exit school grounds at 3.10pm via the designated gates.
- All community user groups must have a COVID 19 safety plan in place.
- Singing and chanting to be avoided.
- Enhanced cleaning will remain in place until the end of Term 4.

## STAFF UPDATE

Congratulations to Alice Steel who has been successful, after an exhaustive application and interview process, in securing the Assistant Principal Learning Support position. Though based at Panania Public School, she works across a network of schools to provide consultative advice, support, planning and teacher professional learning in regards to students with additional needs. Currently relieving in the position for around 5 years, Alice's level of expertise and extensive experience is highly valued. We look forward to her permanently joining our executive staff and school team.

## EVERYDAY MATHS HUB <https://education.nsw.gov.au/campaigns/mathematics>

The Everyday Maths Hub is up and running. It supports parents/carers to explore mathematics concepts with their children through fun, creative and practical activities. Activities are grouped into three categories: out and about, at home and hobbies. They include: I spy, Scavenger Hunt, route planning, camera angles, nature walk, playing pool, board games, chef for the night, quilting, and family fantasy sport.



## KINDERGARTEN ORIENTATION

Thank you to the parents, carers and children that made our first blended orientation highly successful. Zoom sessions provided much needed information and were able to alleviate the anxieties of first time parents. Face to face meetings followed by a gift bag of resources and online materials will ensure our new students will arrive prepared in 2021. Following BEST START appointments, their first full day of Kindergarten will be Wednesday, 3 February 2021. We look forward to seeing you all then and in the meantime check out the film clips on our school website under Kindergarten 2021.

<https://panania-p.schools.nsw.gov.au/kindergarten-2021.html>

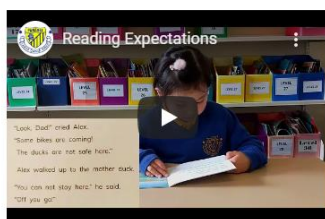


We hope you enjoy viewing our School Tour video.

Please browse our School Activities folder and our Panania Public School YouTube page for videos of many activities that have taken place at our school.

Starting Kindergarten can be an emotional journey for your child.

Please enjoy listening to some of our children speaking about their Kindergarten experiences.



By the end of Kindergarten, it is expected that your child can read a level 9 PM reader with fluency and comprehension.

It is also expected that your child can self-compose two sentences that make sense.



## BOOK WEEK IN PICTURES

Students and staff celebrated Book Week on Tuesday, 10 November with a whole school Book Parade in conjunction with our Book Fair. The theme this year was "Curious Creatures, Wild Minds".

Dressing up as a favourite book character is a fun form of escapism where the imagination can run wild.

Finn was lucky enough to go home on a Harley-Davidson, driven by his dad. How exciting Finn!! We are all jealous.

Thank you to Mr Beattie for organising.







## UNIFORM SHOP NEWS

### LOST PROPERTY CHECK – FRIDAY, 11 DECEMBER 2020

The lost property baskets are overflowing. If you are missing items of clothing, lunch boxes and drink bottles, please check the bins before **Friday, 11 December** as our volunteers will be clearing the baskets and returning all labelled items to students. Any unlabelled uniform items will be donated to the Uniform Shop for resale as pre-loved.

### Second Hand Items

All pre-loved items for sale are in a reasonable condition. Until we are able to reopen the shop to the community, the volunteers will choose the best item available to fill your order.

No refund or exchange is available on second hand items.

### 75% OFF SALE

We are offering 75% off all remaining stock from our previous supplier as well as discontinued stock. There are limited items and numbers available, please refer to the list below:

#### **GIRLS:**

L/S Peter Pan Shirt Size 8 only	S/S Peter Pan Shirt Sizes 4 & 8
Summer Tunic Sizes 6,8,12,14,16	Winter Tunics Sizes 8,10,12,14,16
Discontinued Bootlegs Sizes 4-16	Discontinued White Shirts Sizes 6,12,14,16,20

#### **BOYS:**

L/S Shirts Sizes 4 & 8	Long pants Sizes 4,10,12,14,16,18
S/S Shirts Sizes 10,12,14,20	Boys Shorts Sizes 10,12,18

#### **UNISEX:**

Football Socks Small only	Zip Jacket Size 4 only
Jumpers Sizes 4,8,12,14,16	L/S Sports Polo Sizes 4,6,8
Discontinued School Bags	S/S Sports Polo Size 14 only
Beanies	Microfibre Track Pants Sizes 4,10,16
Microfibre Jackets Sizes 4,8,10,12,14	Microfibre Sport Shorts Sizes 4,6,12,14,16

Please email the uniform shop at [pananiapublicuniformshop@gmail.com](mailto:pananiapublicuniformshop@gmail.com) for orders. There is a 2 week refund or exchange on items purchased.

Uniform Shop Committee.



# GETTING READY TO START SCHOOL



## Physical health and wellbeing

- Use a toilet independently
- Open lunch box and packaging
- Drink from a water bottle
- Clean nose with a tissue
- Dress and undress (jumper, hat)
- Hold a pencil and make marks on a page



## Social competence

- Follow rules
- Follow routines
- Demonstrate responsibility
- Demonstrate respect
- Interact and play appropriately with peers
- Recognise and greet familiar people



## Emotional maturity

- Separate from parents with ease
- Show attentive behaviour
- Help others
- Demonstrate appropriate social behaviours like turn taking and sharing
- Look after own belongings
- Emotions displayed match the event
- Respond to others with care



## Language and cognitive skills (school based)

- Identify own name in print
- Begin to recognise written numbers
- Begin to recognise written letters and words
- Rote count 1-10
- Listen to a short story
- Respond to a short story: "I like the part when ....."
- Complete a simple puzzle



## Communication skills and general knowledge

- Speak clearly
- Express needs
- Express wants
- Follow one step instructions
- Respond to simple questions
- Retell a familiar event
- Share information about self and family
- Talk about likes and dislikes

## SCHOOL RULES

The rule we are focusing on for  
Term 4, Weeks 6, 7 & 8 is:

### *Be Safe*



You can support us at home by having discussions with your child/children about "Being Safe" and what this rule means in different settings.

## SCHOOL VALUES

### *Be Persistent/Fairness*



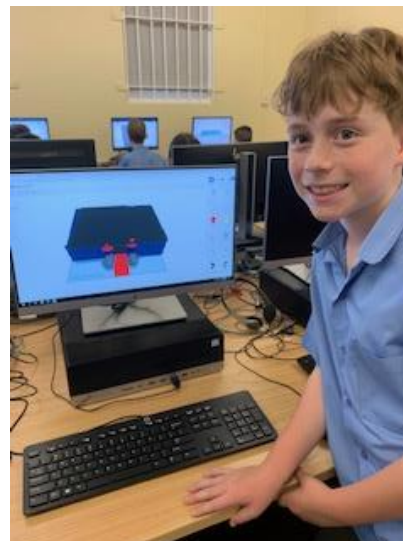
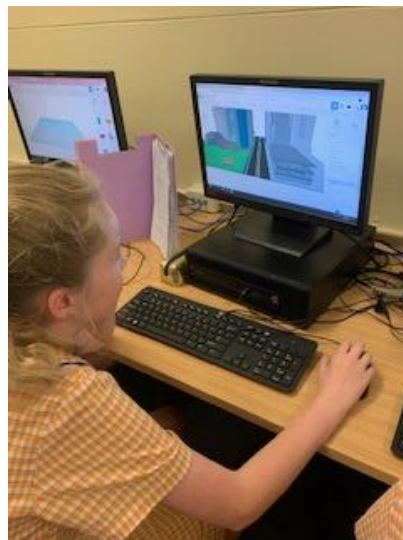
Please support us at home by having discussions with your child/children about what being 'Persistent/Fairness' means at home, at school and in the community.

## STAGE 2 USING TECHNOLOGY IN THE WRITING PROCESS

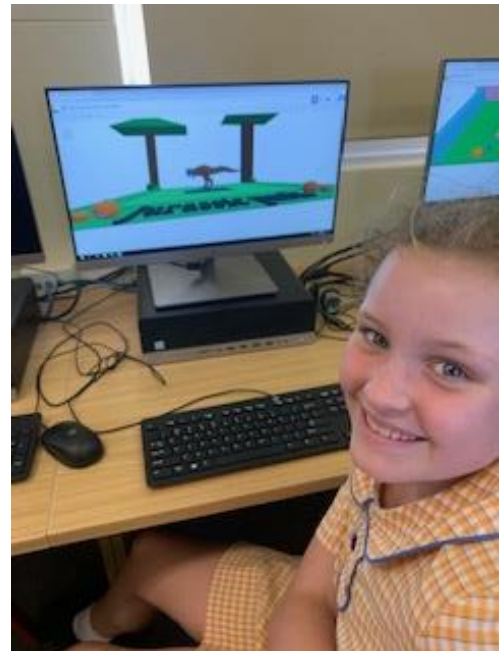
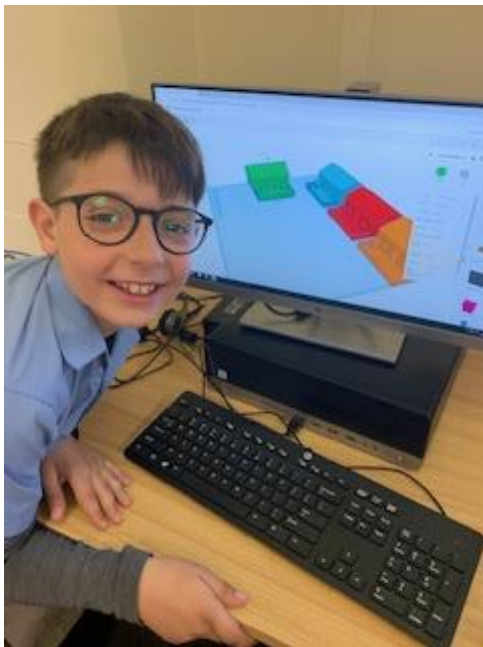
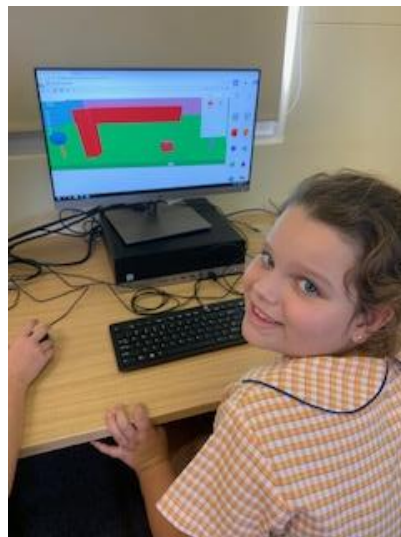
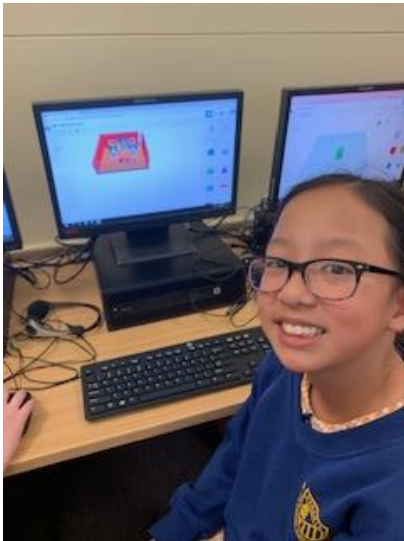
As part of this term's imaginary text writing program, students in Stage 2 have been using Tynkercad to create a scene or setting for an imaginary text. This creation was then used by students to compose their text.

Tynkercad is a free, online 3D-design modelling program that runs in a web browser. Students completed online tutorials to develop their ability to move, adjust and combine 3D shapes in order to create buildings, cities, airports, spacecraft, rainforests and animals.

Whilst using this learning tool, students were highly engaged and demonstrated use of their critical and creative thinking strategies to create fantastic scenes for use in their texts.







## COLOURING COMPETITION

Thank you to everyone for participating in the colouring competition. Criteria used for judging included:

- Neatness
- Good colour use
- Care taken to stay within the lines.

The winners are:

**Kindergarten:** Zoe Tsakiridis (KC)

**Stage 1:** Eleanor Mohamed (2M)

**Stage 2:** Sophia Geers (4S)

**Stage 3:** Maya Campbell (5/6P)

Each winner will be provided with a \$10 gift voucher from the canteen.

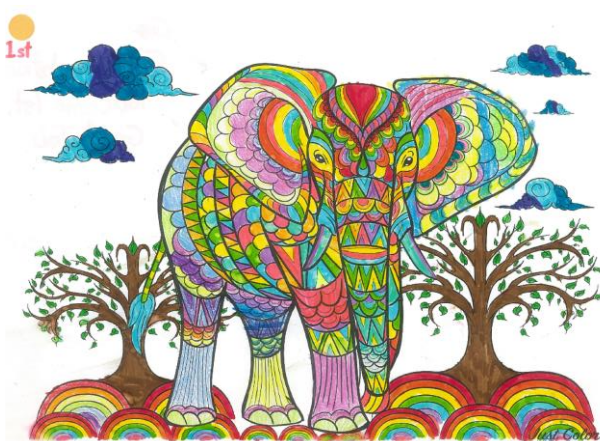
Thank you Emily King, Natalie Reeves, Tahlia Khoury and Skye Newman for organising.



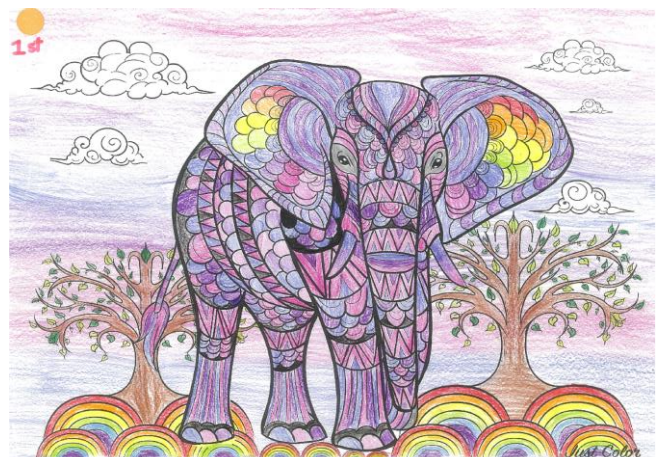
Zoe Tsakiriolis KC



Eleanor Mohamed 2M



Sophia Geers 4S



Maya Campbell 5/6P





Effective fathering means a generation of kids with happier, healthier futures.



## What is The Fathering Project?

The Fathering Project is here to support fathers and father-figures. We remind dads how important they are, and empower them to be the best parents they can be.

**Research shows that fathers have a significant impact on academic, social and emotional wellbeing of children - and are a lasting influence into adult life.**

Regardless of whether dads and kids live together or apart, studies have shown that children do better in school when their fathers are involved.

**Be the best father you can be** - learn more about Dads Groups or explore our online information and resources for dads at [www.thefatheringproject.org](http://www.thefatheringproject.org).

[thefatheringproject.org](http://thefatheringproject.org)



## Help your children to start school well!

Starting school can be a big change for your child and family. The following advice is based on research and the Fathering Project's years of experience supporting fathers and father-figures. It is aimed at helping Dads to support their children when starting school, through positive, meaningful engagement.

### Plan your school involvement for 2021.

Children love seeing dad at school. Dads, you can get involved with your child's school by:

- **Lending a hand**

Plan at the start of the year how often you can volunteer - in the canteen, at camp, excursions or in the classroom and on working bee days.

- **Committing to dates**

Once you've finalised the days you're volunteering, block them in your diary.

- **Being part of the community**

Getting involved in your children's school community helps dads connect with teachers, school friends and other school parents.

### Supporting their learning.

Education empowers children to interpret the world around them. You can encourage your children's learning by showing interest.

- **Show you are interested**

Enthusiasm in your child's work encourages them to put greater value on their education.

- **Talk about feelings**

Teach your child to recognise and name their feelings.

- **Continue with play time**

Play time with you is important to your child's learning and development because it encourages exploration, discovery, negotiation, risk taking, and problem-solving.

Play games that practise friendly behaviour. Taking turns, being fair, sharing, controlling emotions, cooperating.





Be in partnership with the school.

By developing a good relationship with the school and your child's teachers, you send powerful positive messages to your child about the importance of school and learning.

- **Get to know the teacher/s**

Meet the teacher/s and let them know you want to stay in touch.

Share information about your child that may be helpful for their progress.

- **Make time to attend class parent meetings**

If you can't attend, book another time.

Reach out to your child's teacher if you have any questions or concerns.

- **Get school communications**

Ensure you are receiving and reading online communications from the school.

- **Find the right time**

If your child receives work to do at home, set a routine after school for play and homework so the children know what's expected of them each week.

The Fathering Project recognises fathers and father-figures play a vital role in children's lives. There is strong evidence demonstrating fathers' and father-figures potential to positively influence their children's health, social and emotional wellbeing and academic success.

For more helpful tips for dads and father figures of children starting school, visit [www.thefatheringproject.org](http://www.thefatheringproject.org)

**Join our Dads Group! Contact the school or go to [www.thefatheringproject.org](http://www.thefatheringproject.org)**





Preparing kids for

## BIG SCHOOL

- ✓ Ages 2-6 years
- ✓ Learning programs delivered by experienced early childhood educators
- ✓ Comprehensive school readiness & transition to school program
- ✓ Established links with local school
- ✓ A reputation that extends over 40 years
- ✓ Government child care subsidy (CCS) approved

Our program assists children in developing confidence, independence, social skills and learning abilities they will need to make the adjustment to school life. Our educators work with each child and family to ensure we deliver a tailored program that meets the child's individual learning and developmental needs.

Call 9771 3461 to book a tour or visit us online at

[www.pananiapreschool.com.au](http://www.pananiapreschool.com.au).



88 Tower Street, Panania  
Open 8am-4pm, Monday to Friday

Limited  
places  
for 2021

# Share the joy



## Wondering what to give?



Toys 'n' Tucker



## HEAD ACADEMY KUNG FU PADSTOW

Head Academy Kung Fu provides a martial arts program like no other.  
Our classes specialise in:

- Small student to teacher ratio
- The Bully PROTECT program
- Real traditional self defence
- Meditation & Focus building for all ages

Covid safe plans are thoroughly in place currently  
REGISTERED ACTIVE KIDS VOUCHER PROVIDER: CLAIM \$100



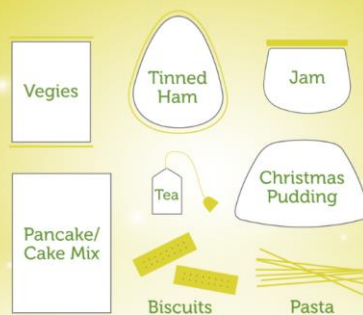
Claim a free & unlimited  
2 week trial at

[headacademy.com.au](http://headacademy.com.au)  
CALL us on 0420 591 110

Email: Admin@kungfupadstow.com.au  
Address: 1st floor/35 Padstow Pde, Padstow



## Wondering what to give?



Toys 'n' Tucker

